

# HydroMace<sup>®</sup>

XCI

The rugged, multi-purpose environmental monitoring and telemetry platform



**Smart Packaged Monitoring...  
Ready-to-Go straight out of the box**

- ✓ Monitor a vast array of environmental sensors and equipment
- ✓ Easily connect multiple AquaTROLL and LevelTROLL sensors
- ✓ Remote data access with alerts, alarms and telemetry-ready for effective, low-cost control and rapid response
- ✓ Solar panel kit for remote locations
- ✓ Field-tested and proven

[www.macemeters.com](http://www.macemeters.com)

**mace** 

An  In-Situ Company

## HydroMace XCi

The HydroMace XCi can be used to monitor just about any environmental sensor. Use the versatility of HydroMace XCi to monitor inputs as diverse as: Flumes & weirs, water quality sensors & rainfall gauges, drinking water flows (leak detection) and weather stations.

The HydroMace XCi continues the long heritage established by MACE five decades ago for remote data logging and telemetry.

With a fully integrated data logger, solar regulator and battery housed in one rugged weatherproof enclosure, the HydroMace XCi is built to withstand the harshest of environments. Furthermore, the tradition of the HydroMace is continued by the ability to plug 'n' play just about any environmental sensor.

With the license-free point 'n' click FloCom + configuration software, no proprietary coding knowledge is required to get the HydroMace XCi going in record time!



### Ready-to-Go straight out of the box

The MACE HydroMace XCi system includes:

- ✓ Data logger
- ✓ Battery
- ✓ LCD display
- ✓ Solar regulator
- ✓ Multiple cards (application dependent)

All this in one lockable, ruggedized, weatherproof enclosure. No more hunting around for bits and pieces. In most cases you can be up and monitoring in just a couple of hours.

### Easily configure with MACE FloCom+

- Free configuration and diagnostic software
- Powerful, easy to use Windows® interface
- Painless point 'n' click channel calibration
- No proprietary coding knowledge required

### Remote configuration, diagnostics and data retrieval with WebComm Card

- The MACE 4G WebComm Card enables the HydroMace XCi device to automatically upload internally logged data to HydroVu Data Services or other FTP servers.
- Powered by and housed in the XCi device, the integrated WebComm Card enables real-time data communication over GSM cellular networks.
- Access data through the free WebComm Server for simple data viewing and remote configuration. Or use the HydroVu platform for advanced visualization and APIs for data export to any platform.
- SMS/email alert subscription service available.

### Easily connect In-Situ sensors

- Plug 'n' play In-Situ sensors with an SDI-12 card
  - Aqua TROLL 600 multiparameter sonde
  - Aqua TROLL (depth/EC/temp.) sensors
  - Level TROLL (depth/temp.) sensors
- Support up to 10 sensors per SDI-12 card
- Powerful SDI-12 setup utility

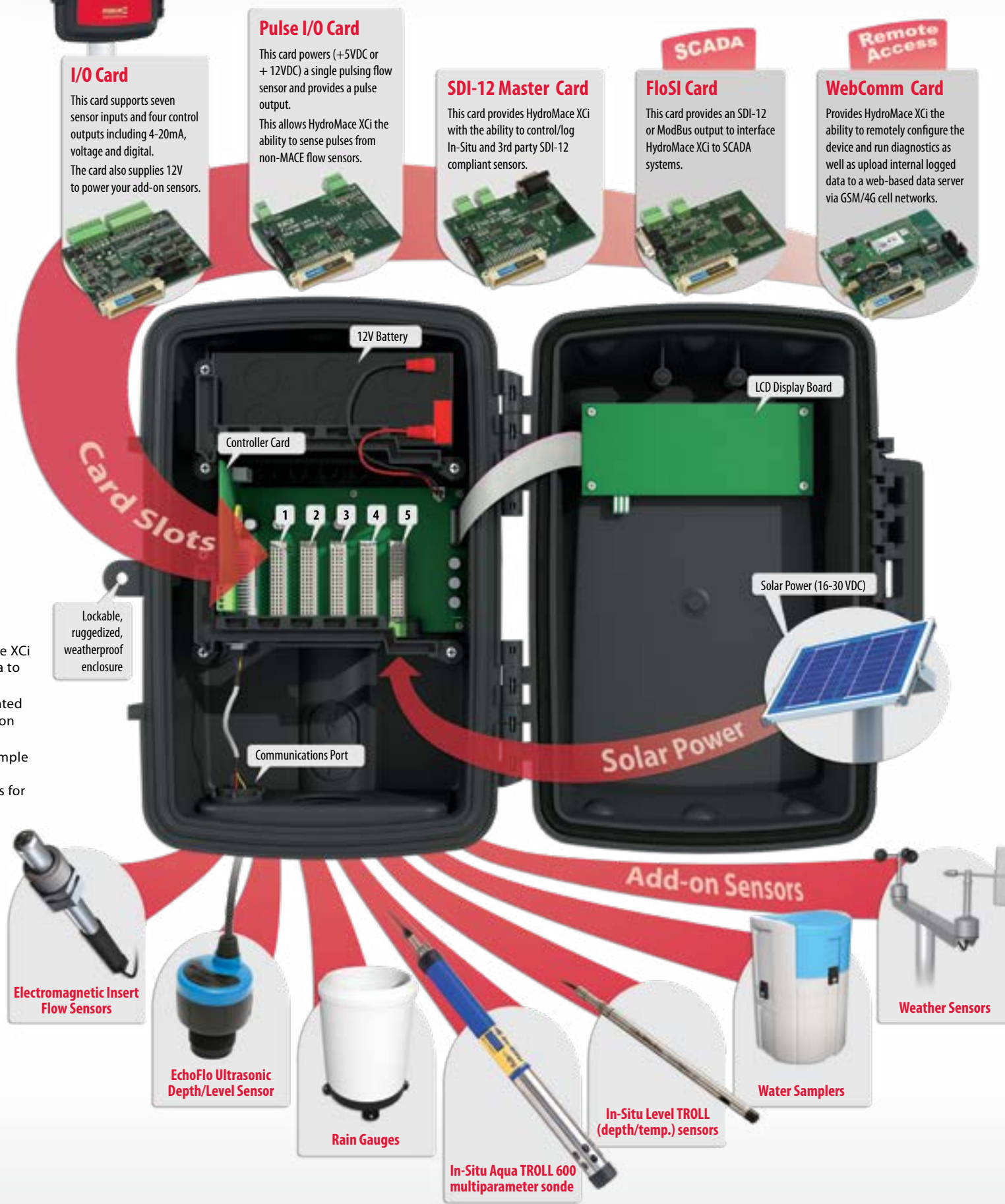
### Flume & weir equations built-in

- Native support for:
  - Rectangular weirs
  - V-notch weirs
  - Parshall flumes
  - Replogle, Palmer-Bowlus flumes
- Lookup table for other rated structures
- Multiple instances of each flume/weir

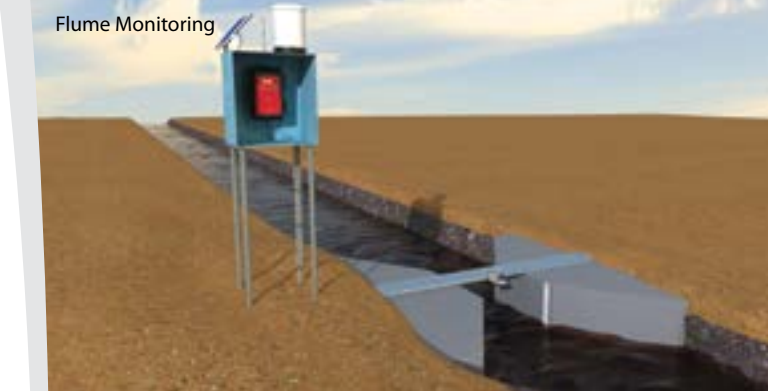
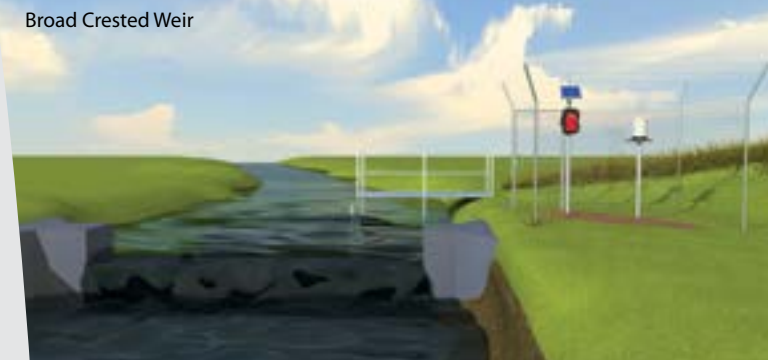
## Multiple cards for multiple sensor applications

The HydroMace XCi (multiple card interface) allows the user to efficiently monitor an array of environmental sensors. It's a smart packaged monitoring solution that provides remote data access with alerts and alarms. It's also telemetry-ready for effective low cost control and rapid response. Users can install any combination of the MACE cards shown, in the five available card slots.

Choose the right card/s for your application to tailor the HydroMace to your exact monitoring requirements now and in the future.



## Solutions using HydroMace XCi



## HydroMace XCi Specifications



### GENERAL

Weight	Approx. 5 kg (11 lbs.)
Dimensions	365 mm (H) x 260 mm (W) x 170 mm (D) 14.4 in. (H) x 10.2 in. (W) x 6.7 in. (D)
Enclosure rating	IP66
Enclosure material	UV stabilized polycarbonate
Operating temperature (with internal battery installed)	-15 to +50° C (5 to 122° F)
Operating temperature (with internal battery removed and external power used)	-20 to +65° C (-4 to 150° F)
Backlit display	16 character x 2 line alphanumeric LCD
Program memory	2 Mb flash (sufficient for 600,000 discrete readings)
Power	Internal 12Volt 7.2Ah battery with external solar panel or mains charger
Units of measure	User definable (metric/US)
Application software	FloCom+ PC software for system configuration, data downloading and diagnostics. Minimum system requirements - Windows® XP
Factory backup	24 months - parts and labour guarantee

**Note to end users:** These specifications are subject to change at any time without notice. MACE takes no responsibility for the use of these figures. Please consult MACE for the latest specifications before using them in contract submittals or third party quotes etc. MACE reserves the right to change specifications without prior warning. All quoted figures are based on test conditions and are subject to variation due to site conditions.

## Five decades of innovation from the inventors of solid state data logging

MACE is an Australian owned company founded in 1968 by electrical and mechanical engineer Lawrence Campbell who recognized the importance of flow measurement and flow monitoring in the global environment. For five decades MACE has designed and manufactured electronic monitoring instrumentation including ultrasonic flow meters, data loggers and controllers. Continued commitment to research and development over the past four decades has ensured MACE's provision of the most advanced high technology equipment for the agricultural, industrial and environmental markets.

MACE has a core team of research and development engineers who are focused on providing customer driven products that are both easy to use and withstand the test of time in often remote and harsh environmental conditions. MACE is committed to providing its clients with personalized service, training and technical back-up to ensure successful monitoring.

### DFR-77 DATA LOGGER

**1977** - The world's first commercial EPROM data loggers, the MACE DFR-77 were delivered. Hundreds of these instruments were used throughout Australia and Papua New Guinea working under the harshest imaginable conditions.

The EPROM data recording technique proved to be the most reliable method of electronic data storage.



### HYDROMACE TRS

**1984** - MACE introduced the Hydromace system which gave environmental field stations the combined capabilities of data logging, control, telemetry via telephone, radio or satellite and intelligent response to both computer or human interrogation.



### HYDROMACE 2000

**1992** - The HydroMace 2000 data logger provided multi-channel logging and control in water catchments, sewer treatment plants and industrial pollution applications. A leader in its time, many are still in use in catchment management and flood warning networks across Australia.



DISTRIBUTOR:

[www.macemeters.com](http://www.macemeters.com)

**MACE - Australia**  
Unit 19 / 276 New Line Road  
Dural, Sydney, NSW 2158, Australia  
Phone: +61 2 9658 1234  
Email: [sales@macemeters.com](mailto:sales@macemeters.com)

**MACE - United States of America**  
In-Situ Inc. 221 East Lincoln Avenue  
Fort Collins, CO 80524, USA  
Phone: 1-800-446-7488  
+1-970-498-1500  
Email: [sales@in-situ.com](mailto:sales@in-situ.com)



An **In-Situ** Company